

Aircraft Specifications Sheet

Boeing B777-236

Date of manufacture : **1995**

Location: Europe



Aircraft Specifications Sheet

Boeing B777-236

- ✈ Highlights
- ✈ Avionics
- ✈ Interior

AIRFRAME

| | |
|---------------------------|----------------------|
| Total Hours Since New: | 36 705 |
| Total Landings Since New: | 7 702 |
| Empty Weight: | 310 839 lbs |
| Max Take-Off Weight: | 535 000 lbs |
| Range: | 6 000 Nm (11 112 km) |

VVIP Cabin Presentation

Seating: Approved for 52 PAX

- Fwd galley section including crew rest area
- Master Suite including master bedroom (king size bed and two seats) with ensuite bathroom (double sink and shower), master dining with four seats and master office
- Dining and conference lounge with fwd majilis including 3 single seats, 3 seat divan and two side seats with table, main central table with 6 seats and angle coach with with 3 seats
- Guest bedroom (queen size bed) with ensuite bathroom (double sink and shower)
- Security and communication center to separate the VVIP area from the first and business class
- First class section with 12 seats and with two separate lavatories
- Business class section with 23 seats (6 non TTL) and with two separate lavatories
- Aft galley section

Aircraft Specifications Sheet

Boeing B777-236

- ✈ Highlights
- ✈ Avionics
- ✈ Interior

APU

APU Type: HONEYWELL
APU SERIAL NUMBER: P-1891
Total Time: 2 414 APU-H / 1 339 APU-S

ENGINES

Manufacturer: General Electric
Model: GE90-76B

| | Engine No.1 | Engine No.2 |
|-------------------------|----------------------------|--------------------------|
| Engine Serial Number: | 900-155 | 900-146 |
| Last Shop Visit: | GE Wales | GE Wales |
| Total Time Since New: | 29 581 EH | 22 790 EH |
| Total Cycles since new: | 5 243 EC | 4 527 EC |
| LLP Limiter: | 2 185 Cy (Seal InterStg) | 2 888 EC (Seal InterStg) |
| TSLSV: | 8 545 EH | 3 071 EH |
| CSLSV: | 1 315 EC | 612 EC |
| Type of LSV: | Schedule Rem.+DAC2 Upgrade | EGT Deterioration |

Aircraft Specifications Sheet

Boeing B777-236

- ✈ Highlights
- ✈ Avionics
- ✈ Interior

LANDING GEARS

| | Part Number | Serial Number | Last OVH | CSLV | Next OHL |
|--------|-------------|---------------|----------|------|----------|
| NLG | 162W1000-6 | MC0359P0349 | 06/2014 | 270 | 06/2024 |
| LH MLG | 161W1000-9 | MC0727P0349 | 06/2014 | 270 | 06/2024 |
| RH MLG | 161W1000-10 | MC0728P0349 | 06/2014 | 270 | 06/2024 |

MAINTENANCE STATUS

Airframe on Customized Low Utilization Maintenance Program and followed by EASA approved CAMO
-> Fresh C6 Check performed at AMAC Aerospace, in summer 2023
-> Aircraft complete VVIP modification permed in 2012 under FAA approved STCs



Aircraft Specifications Sheet

Boeing B777-236

- ✈ Highlights
- ✈ Avionics
- ✈ Interior

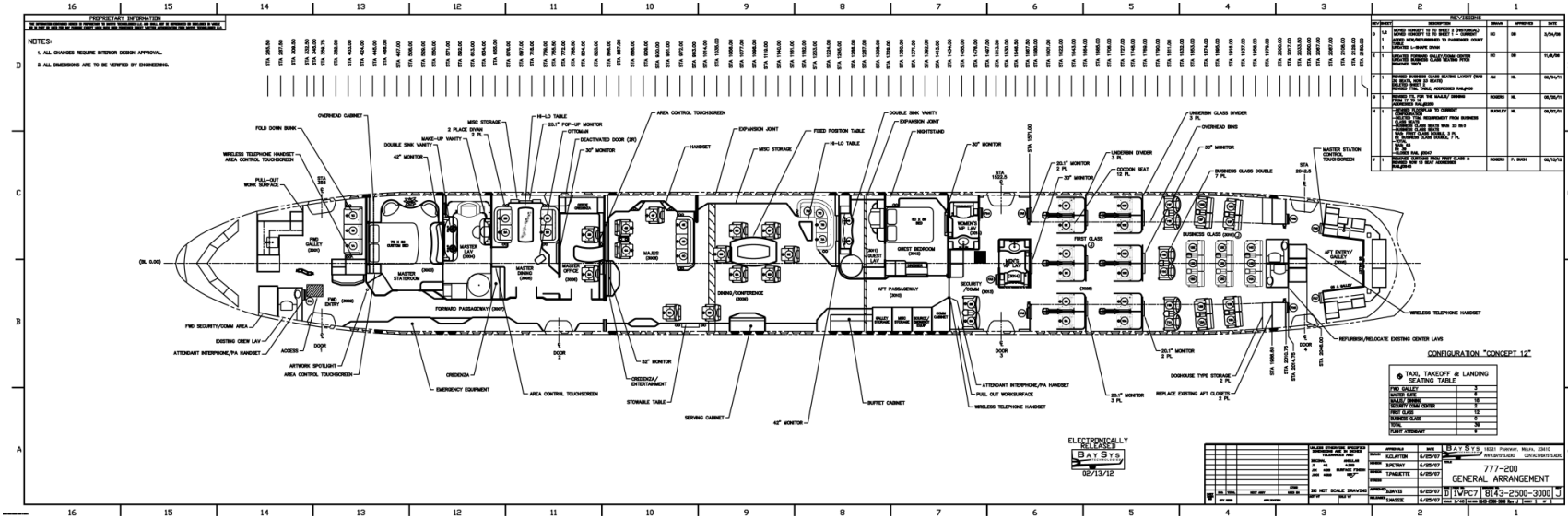
| DESIGNATION | MANUFACTURER | PART NUMBER | QUANTITY |
|--------------------------------------|------------------|----------------|----------|
| ATC Mode S Transponder TRA67A | Bendix Corp. | 066-01127-1301 | 2 |
| DME 900 | Rockwell Collins | 822-0329-001 | 2 |
| VHF Communication unit VHF900 | Rockwell Collins | 822-0323-002 | 3 |
| ILS900 | Rockwell Collins | 822-0298-001 | 2 |
| ADF900 | Rockwell Collins | 822-0299-001 | 2 |
| VOR900 | Rockwell Collins | 822-0297-001 | 2 |
| AFDC-770 | Rockwell Collins | 822-0006-102 | 2 |
| TCAS Change 7.1 (TPA-100B) | Allied Signal | 940-0351-001 | 1 |
| Weather radar (RTA-4B) | Bendix Corp | 066-50008-04 | 2 |
| Control Display Unit | Honeywell Inc. | 4072800-901 | 3 |
| HF Radio | Rockwell Collins | 822-0330-001 | 2 |
| EFIS Control Panel | Honeywell Inc. | 4073770-901 | 2 |
| Radio Altimeter | Rockwell Collins | 822-0334-002 | 2 |
| Flight Data Recorder | Allied Signal | 980-4700-003 | 1 |
| Cockpit Voice Recorder | Loral | S100-0080-00 | 1 |
| ADIRU | Honeywell Inc. | HG2060AD01 | 1 |
| SAARU | Honeywell Inc. | HG2040AD03 | 1 |

ADS-B out implementation is possible by installation of several STCs.

LOPA

Boeing B777-236

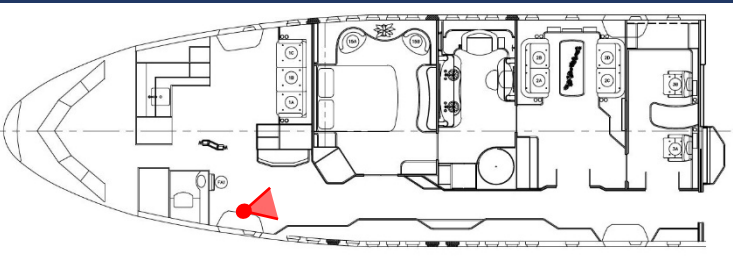
- ✈ Highlights
- ✈ Avionics
- ✈ Interior



Lobby

Boeing B777-236

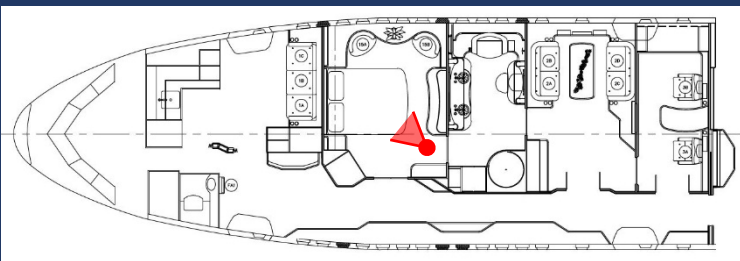
- ✈ Highlights
- ✈ Avionics
- ✈ Interior



Master Bedroom

Boeing B777-236

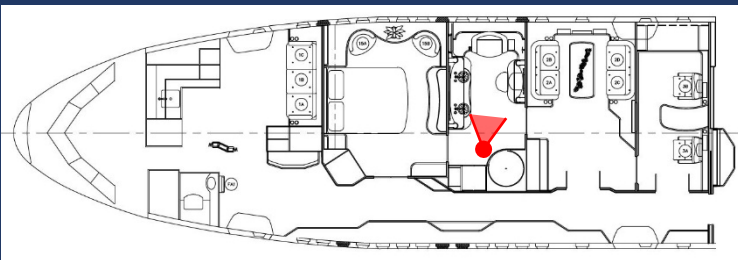
- ✈ Highlights
- ✈ Avionics
- ✈ Interior



Master Bathroom

Boeing B777-236

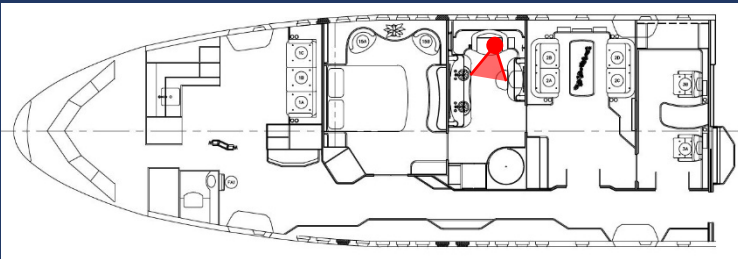
- ✈ Highlights
- ✈ Avionics
- ✈ Interior



Master Bathroom

Boeing B777-236

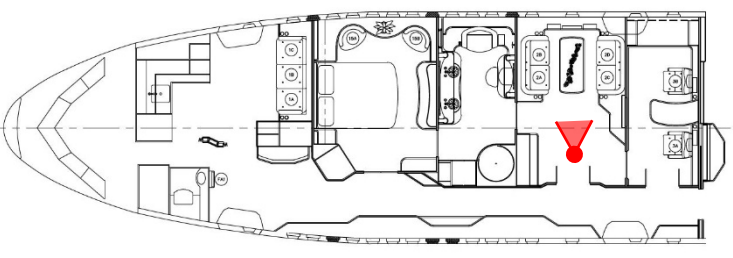
- ✈ Highlights
- ✈ Avionics
- ✈ Interior



Master Dining

Boeing B777-236

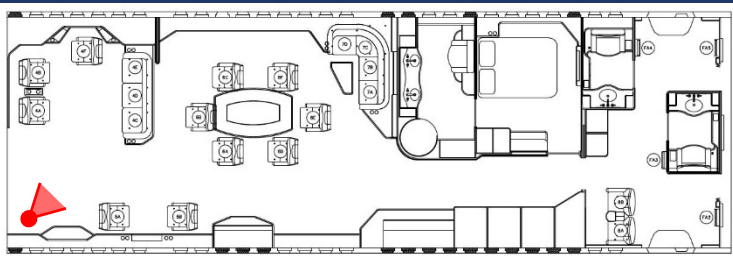
- ✈ Highlights
- ✈ Avionics
- ✈ Interior



Dining and Conference Lounge

Boeing B777-236

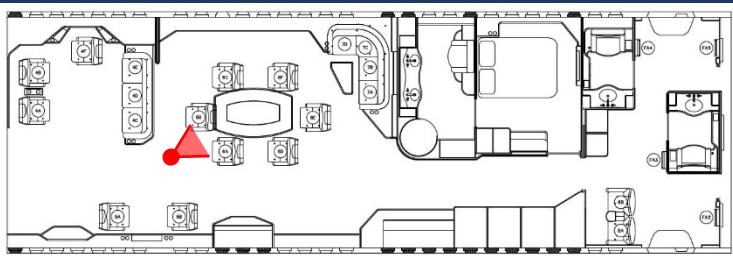
- ✈ Highlights
- ✈ Avionics
- ✈ Interior



Dining and Conference Lounge

Boeing B777-236

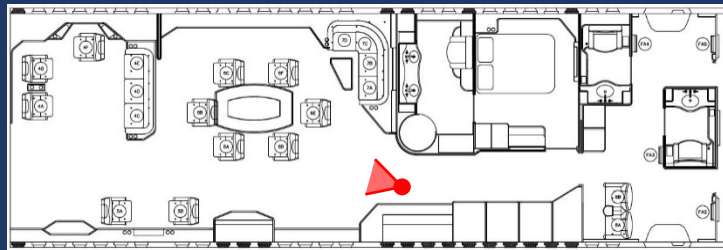
- ✈ Highlights
- ✈ Avionics
- ✈ Interior



Dining and Conference Lounge

Boeing B777-236

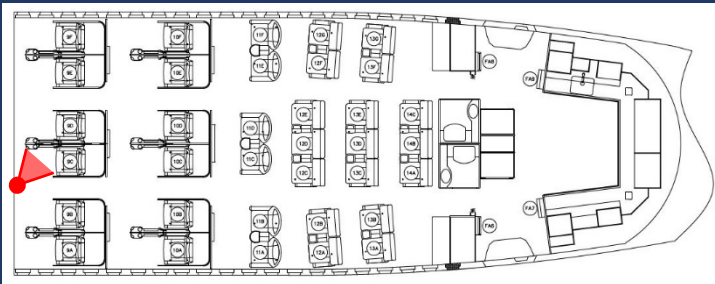
- ✈ Highlights
- ✈ Avionics
- ✈ Interior



First class

Boeing B777-236

- ✈ Highlights
- ✈ Avionics
- ✈ Interior



Business Class

Boeing B777-236

- ✈ Highlights
- ✈ Avionics
- ✈ Interior

